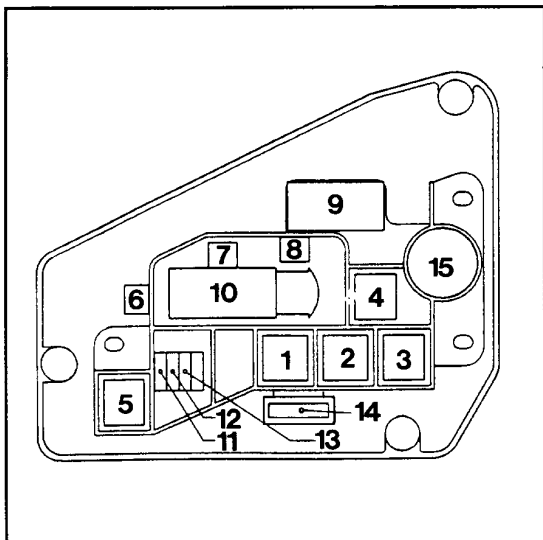
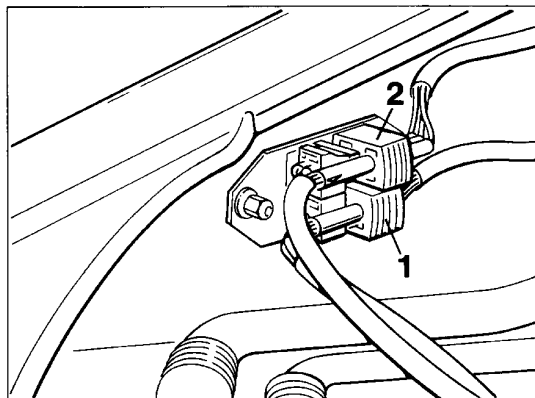


Location of Connectors in the vehicle



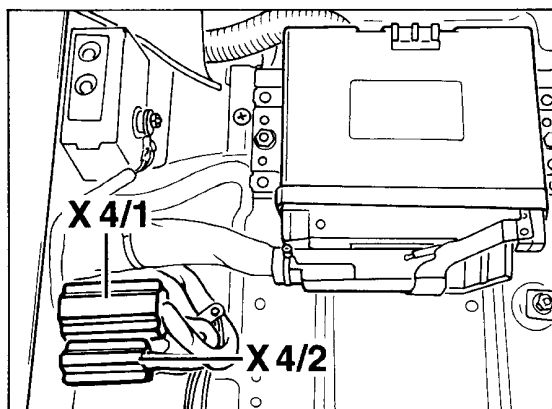
210

10 - Connector X 60



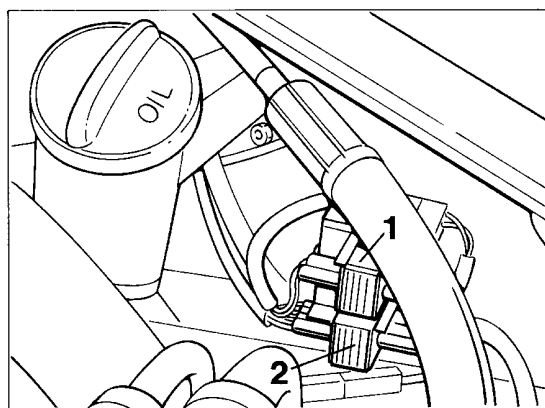
2333-28

Three Way Catalytic Converter (TWC) (Bank 1, Sensor 1)
 2 - Oxygen sensor 1 behind
 Three Way Catalytic Converter (Bank 1, Sensor 2)



2050-28

X 4/1 and X 4/2 next to the Engine Control Module (EMC)

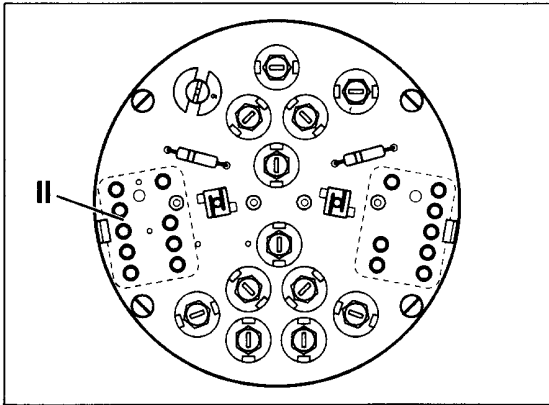


2334-28

1 - Oxygen sensor 2 ahead of
 Three Way Catalytic Converter (TWC) (Bank 2, Sensor 1)
 2 - Oxygen sensor 2 behind
 Three Way Catalytic Converter (Bank 2, Sensor 2)

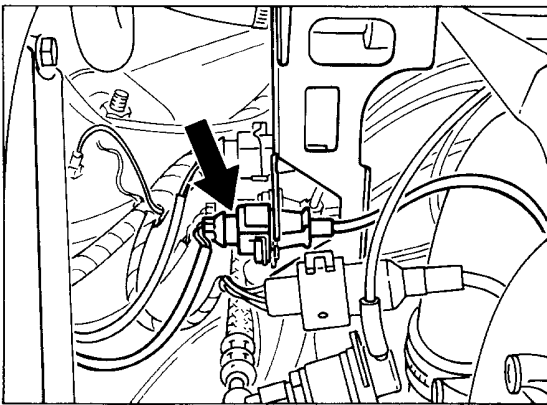
Note

The oxygen sensors receive their reference air through the connectors and connecting leads. For this reason, no contact spray, grease or similar must be allowed to enter the connectors.



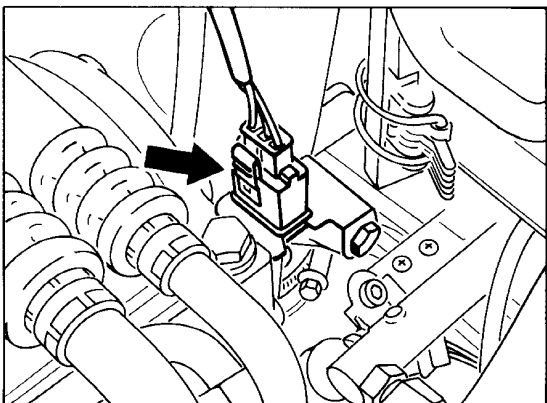
2053-28

Instrument cluster connector II



2044-28

Connector for knock sensor 1

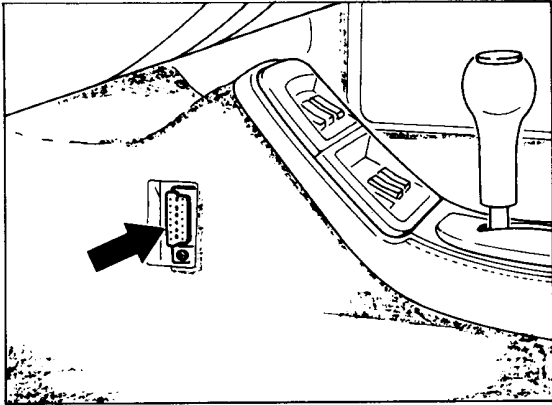


2312-28

Connector for knock sensor 2

Location of Data Link Connector (DLC)

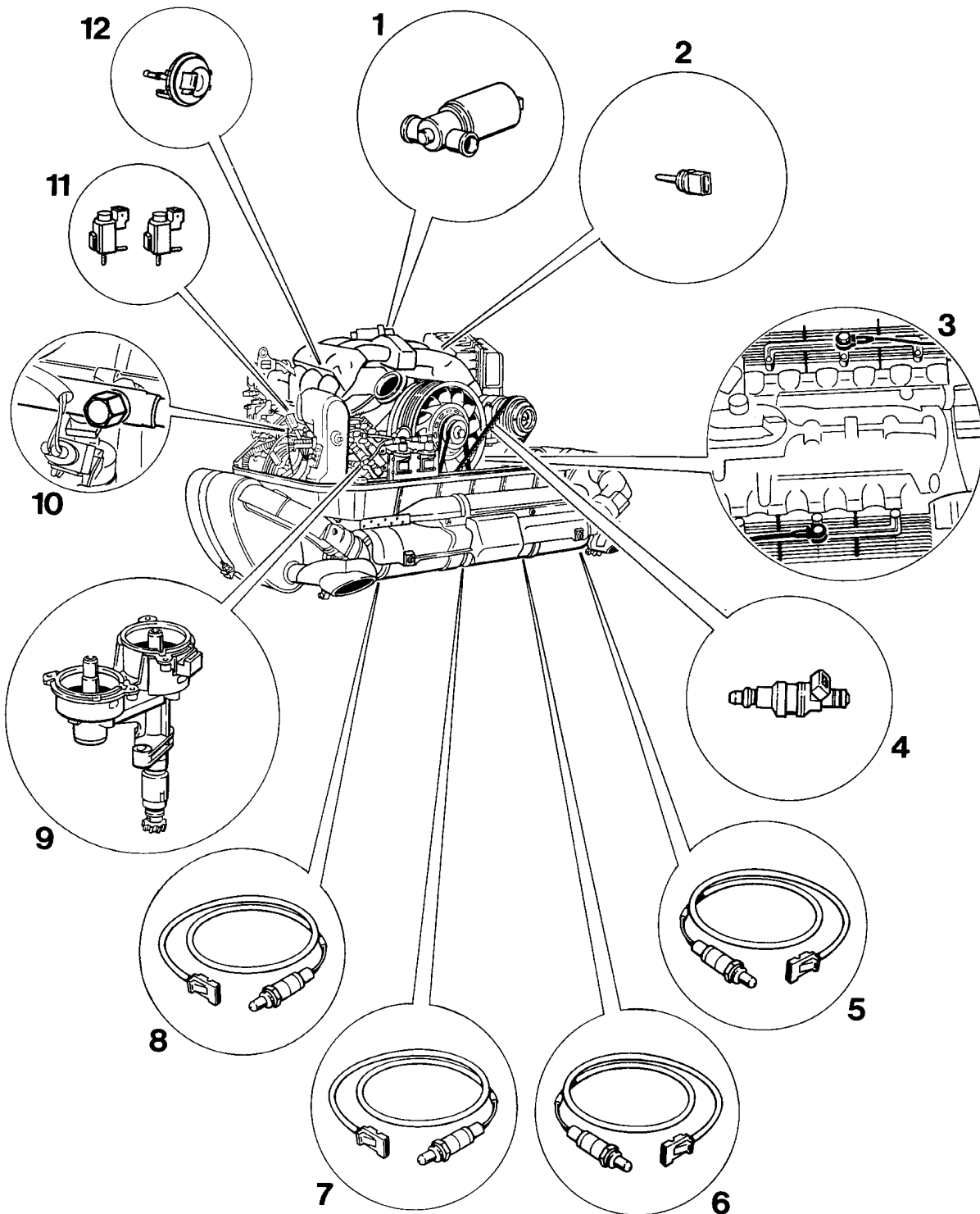
The DLC is located at the left side of the center console and is covered with an inserted cover.



1967-03

The illustration shows the Data Link Connector (DLC) without cover.

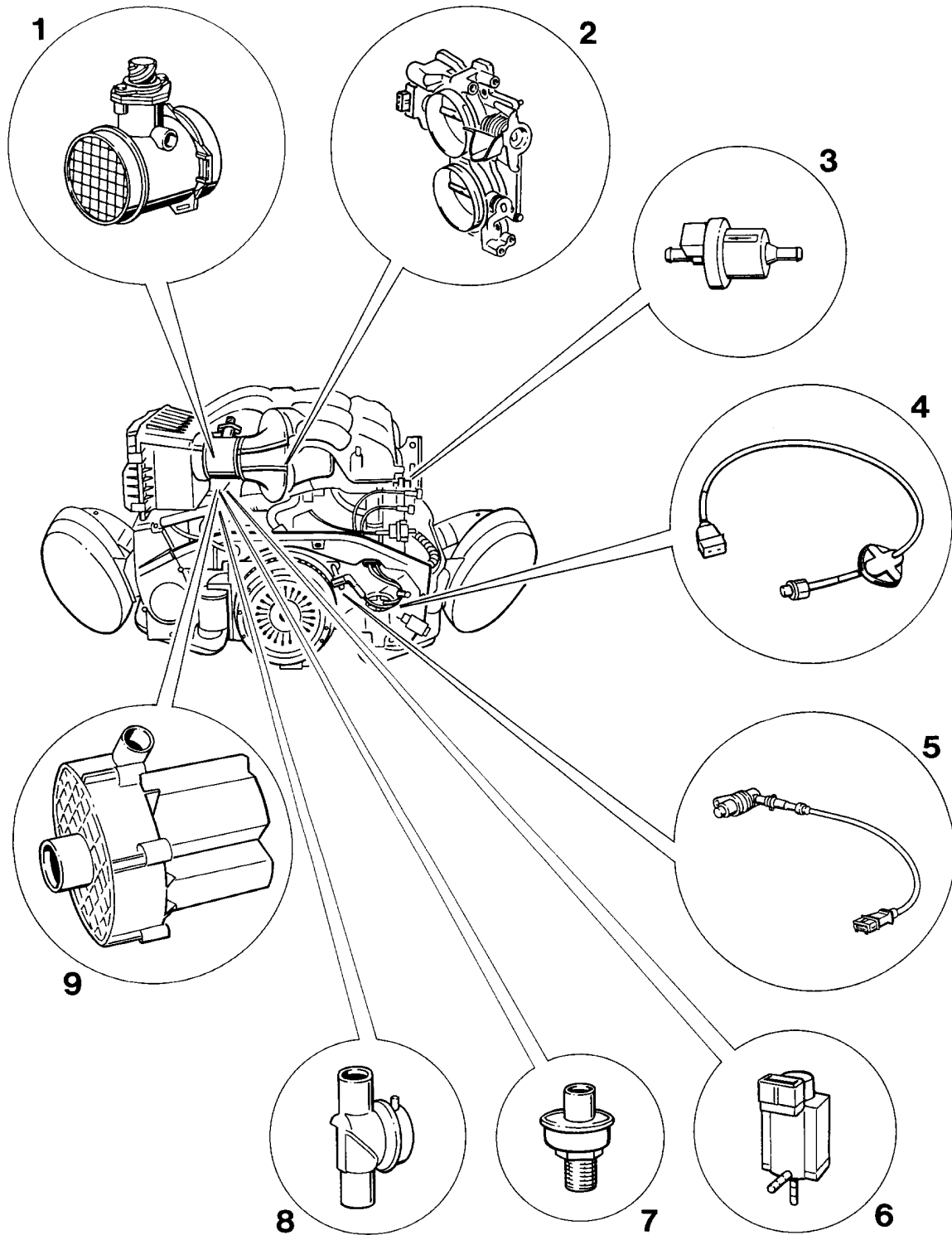
Component Location, Engine



Component Location, Engine

- 1 — Idle air control valve
- 2 — Intake Air Temperature Sensor
- 3 — Knock sensors
- 4 — Fuel injectors
- 5 — Oxygen sensor (HO2S) 2 behind Three Way Catalytic Converter (TWC)
- 6 — Oxygen sensor (HO2S) 2 ahead of Three Way Catalytic Converter (TWC)
- 7 — Oxygen sensor (HO2S) 1 behind Three Way Catalytic Converter (TWC)
- 8 — Oxygen sensor (HO2S) 1 ahead of Three Way Catalytic Converter (TWC)
- 9 — Ignition distributor with camshaft position sensor
- 10 — Connector for fuel pressure measurement
- 11 — Change-over valve for resonance flap and intake manifold length tuning
- 12 — Vacuum capsule for resonance flap and intake manifold length tuning

Component Location, Engine



Component Location, Engine

- 1 — Mass Air Flow Sensor
- 2 — Throttle body with throttle position sensor
- 3 — Fuel tank gravity valve
- 4 — Engine Temperature Sensor (NTC II)
- 5 — Crankshaft position sensor
- 6 — Electro-pneumatic Secondary Air Injection Switching Valve
- 7 — Check valve
- 8 — Pneumatic Secondary Air Injection Switching Valve
- 9 — Secondary Air Injection Pump